

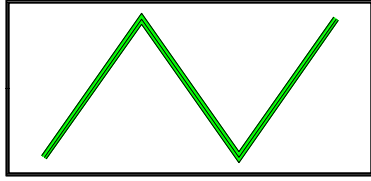
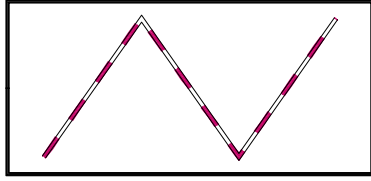
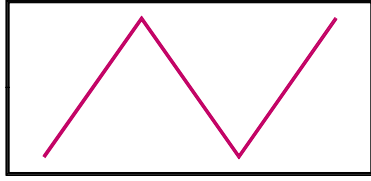
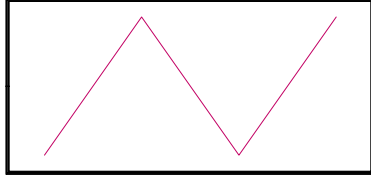
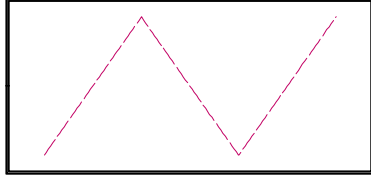
# Juab County

## Land Use Classification

-  USDA Forest Service
-  USDI Bureau of Land Management
-  State of Utah
-  Native American Reservations
-  Private Land
-  Military Reservations
-  National Parks & Monuments
-  State Parks
-  State Wildlife Reserve
-  National Recreation Areas
-  Federal Wildlife Refuge
-  Forest Service & BLM Wilderness
-  Bankhead Jones
-  Sovereign Lands

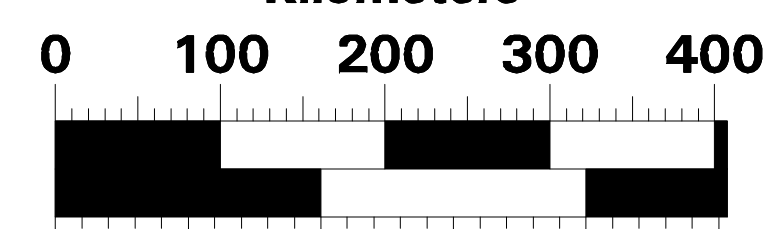
## Road Classification

Symbology Based On U.S.G.S. Classification Codes

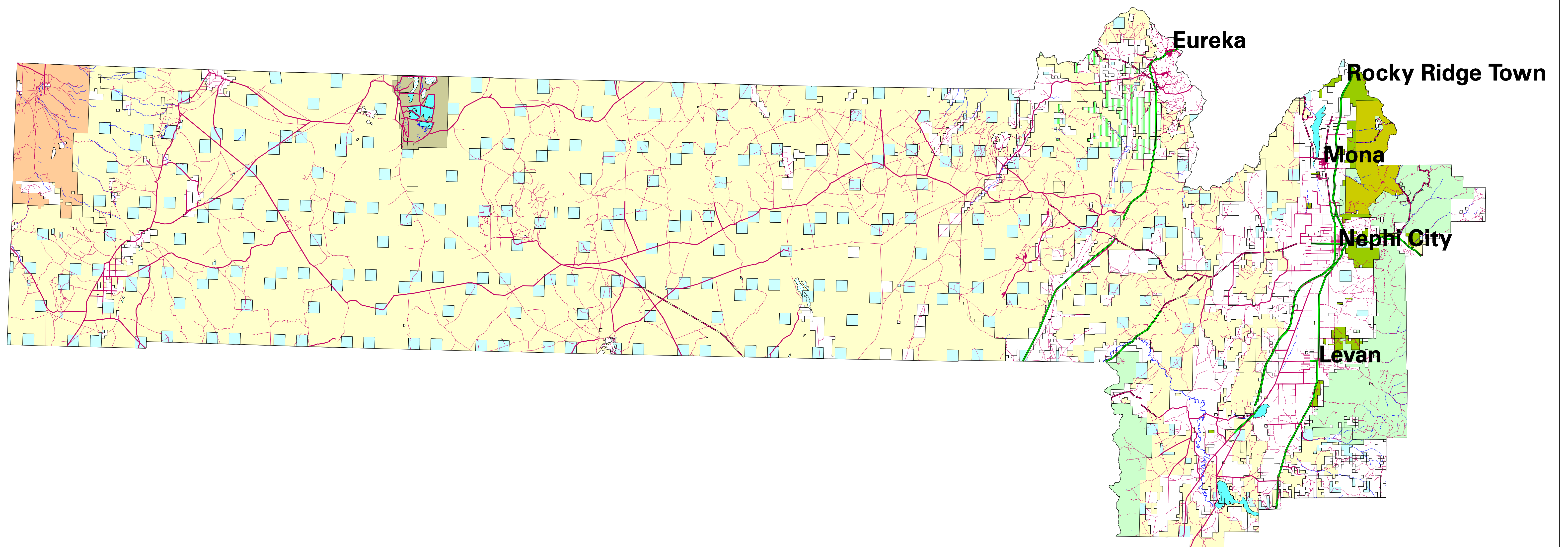
-  Primary Route
-  Secondary Route
-  Primary Road
-  Secondary Road
-  Unimproved Road

Scale 1:4587204

Kilometers



Miles



Map Prepared By  
State of Utah  
Automated Geographic Reference Center  
May 15, 2000

