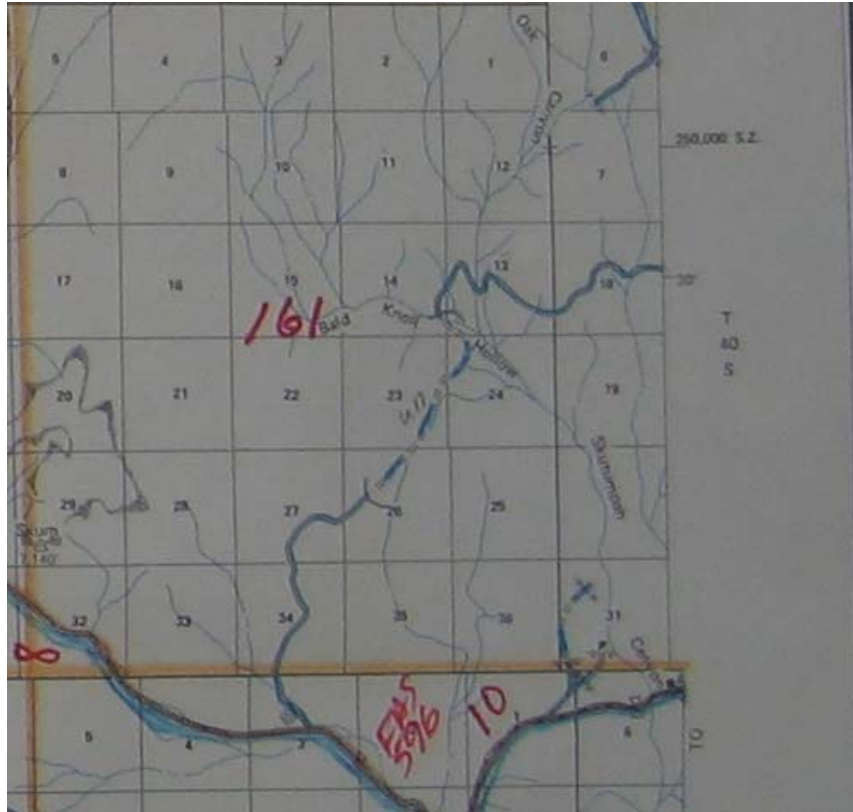
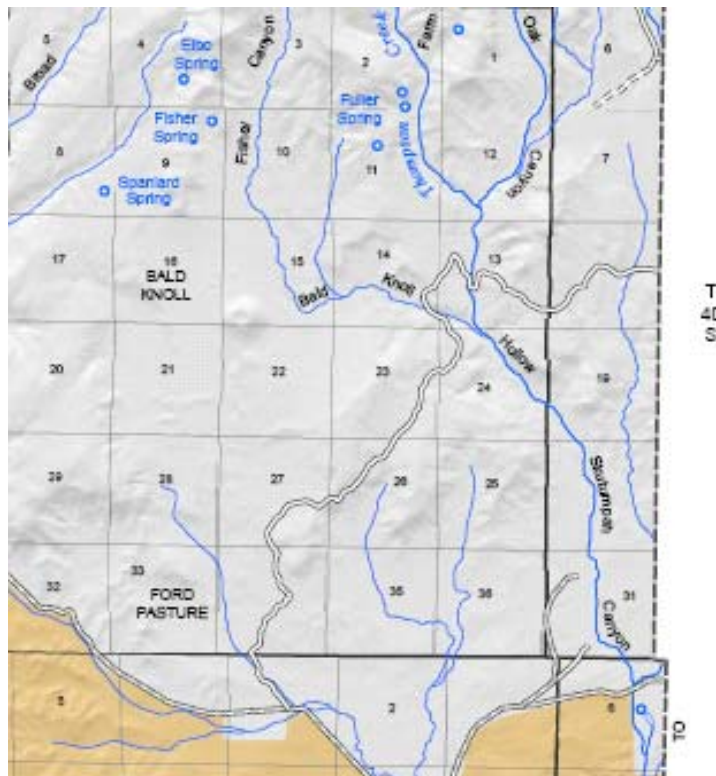


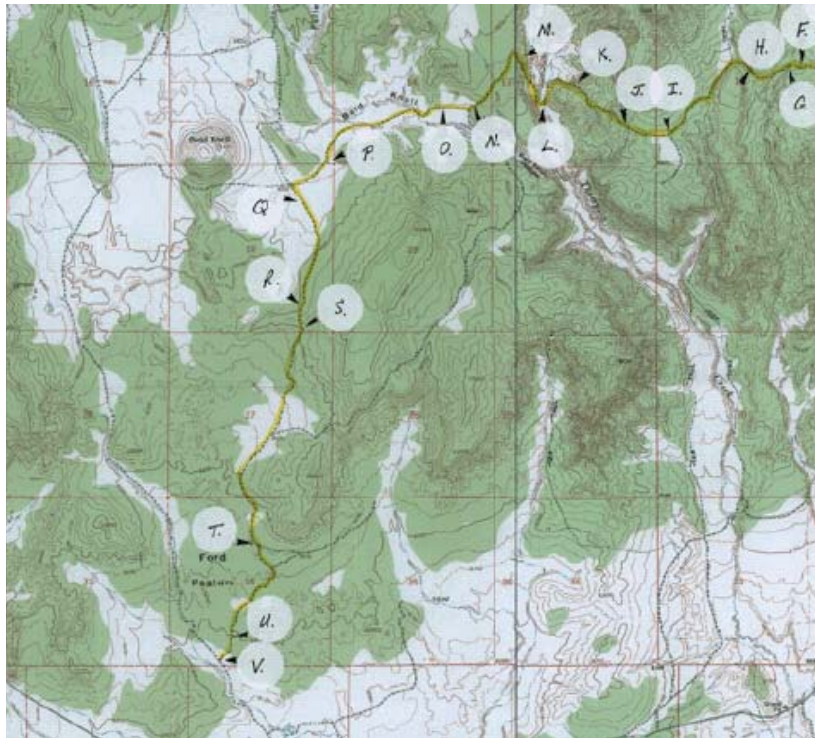
Post 1976 County Highway Maps Still Don't Show the Entire Route



1977 UDOT / Kane County General Highway Map showing County highways.



The 2006 UDOT / Kane County General Highway Map (available as Map 4 at <http://www.udot.utah.gov/main/f?p=100:pg:9088880048595531571:::V,T:,375>) showing a County highway in approximately the same location.



The 2007 Bald Knoll claim. Note that the route depicted on the 2007 claim (from point marked N to point marked T) is not depicted on the UDOT Kane County 1977 map, or the UDOT Kane County 2006 map. This map is posted by BLM at

http://www.blm.gov/ut/st/en/prog/more/lands_and_realty/rs2477_rights-of-way/bald_knoll_road_non/supporting_information/photos_map.html